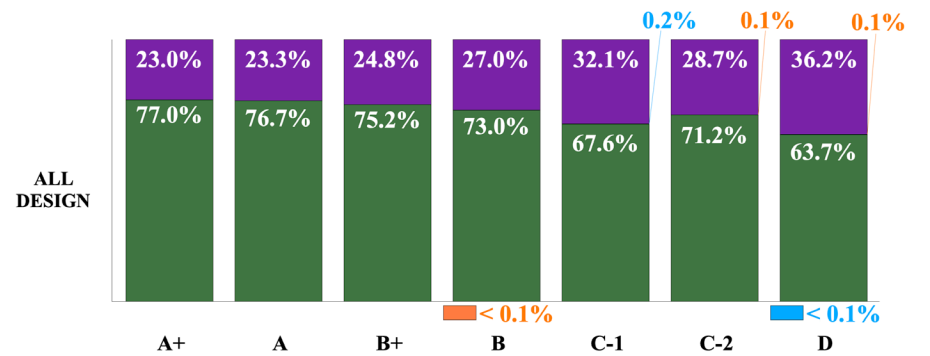
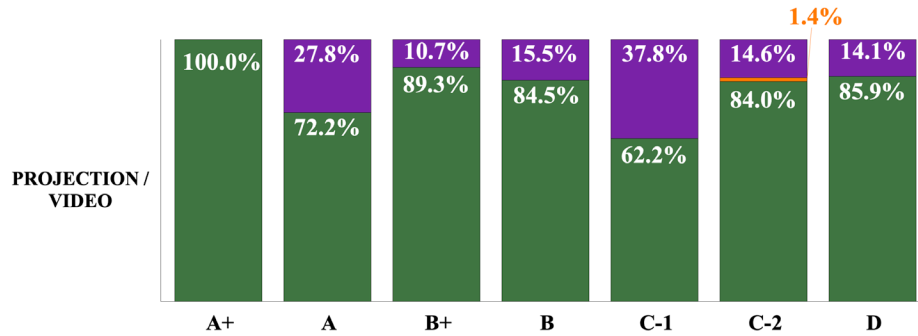
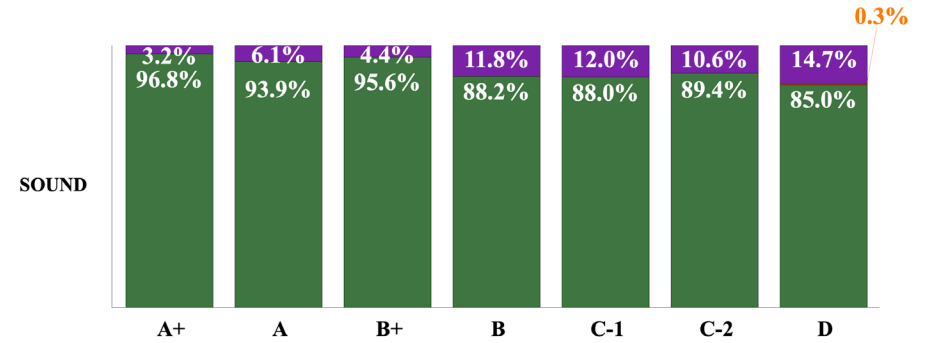
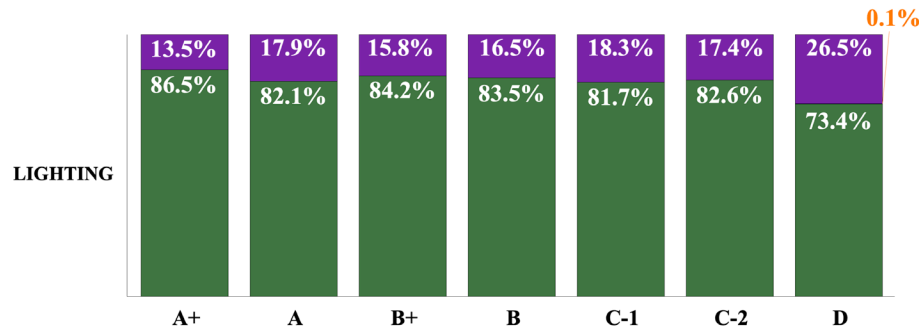
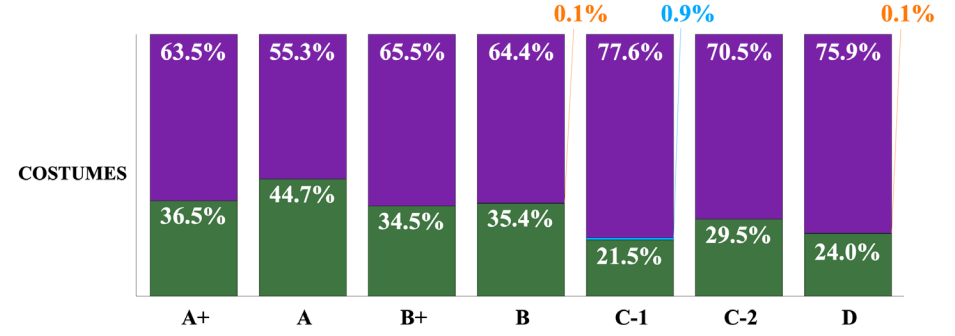
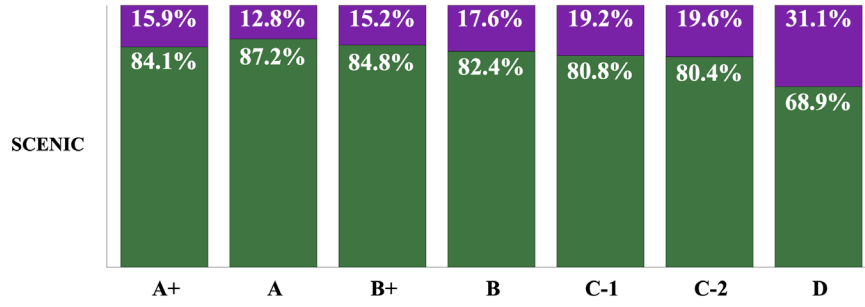


■ HE/HIM/HIS ■ SHE/THEY
■ SHE/HER/HERS ■ THEY/THEM/THEIR

%
 POSITIONS
 OVER ALL
 7 SEASONS

WHO DESIGNS IN LORT THEATRES BY PRONOUN: CATEGORIES

12-13 - 18-19



Who Designs in LORT Theatres by Pronoun: Categories

The following statistics are percentages of positions per LORT Stage Category, as determined by the LORT-AEA agreement (weekly box office receipts and Tony award eligibility) and the LORT-SDC agreement (C category divided into two categories by number of seats, over all six seasons examined—you can look here for more information on minimum rates for designers based on LORT stage categories).

In scenic design, 84.1 percent of the sixty-three positions were filled by he designers, and 15.9 percent by she designers in the A+ category. In the A category, 87.2 percent of the one hundred forty-nine positions were filled by he designers, and 12.8 percent by she designers. 84.8 percent of the one hundred eighty-four positions were filled by he designers, and 15.2 percent by she designers in the B+ category. In the B category, 82.4 percent of the one thousand one hundred fourteen positions were filled by he designers, and 17.6 percent by she designers. 80.8 percent of the two hundred twenty-four positions were filled by he designers, and 19.2 percent by she designers in the C-1 category. In the C-2 category, 80.4 percent of the three hundred seventy-eight positions were filled by he designers, and 19.6 percent by she designers. In the D category, 68.9 percent of the one thousand five hundred seventy-eight positions were filled by he designers, and 31.1 percent by she designers.

In costume design, 63.5 percent of the sixty-three positions were filled by she designers, and 36.5 percent by he designers in the A+ category. In the A category, 55.3 percent of the one hundred fifty positions were filled by she designers, and 44.7 percent by she designers. 65.5 percent of the one hundred eighty-four positions were filled by she designers, and 34.5 percent by he designers in the B+ category. In the B category, 64.4 percent of the one thousand one hundred fourteen positions were filled by she designers, 35.5 percent by he designers, and 0.1 percent by they designers. 77.6 percent of the two hundred twenty-three positions were filled by she designers, 21.5 percent by he designers, and 0.9 percent by she/they designers in the C-1 category. In the C-2 category, 70.5 percent of the three hundred seventy-one positions were filled by she designers, and 29.5 percent by he designers. In the D category, 75.9 percent of the one thousand five hundred fifty-two positions were filled by she designers, 24.0 percent by he designers, and 0.1 percent by they designers.

In lighting design, 86.5 percent of the sixty-three positions were filled by he designers, and 13.5 percent by she designers in the A+ category. In the A category, 82.1 percent of the one hundred fifty-one positions were filled by he designers, and 17.9 percent by she designers. 84.2 percent of the one hundred eighty-four positions were filled by he designers, and 15.8 percent by she designers in the B+ category. In the B category, 83.5 percent of the one thousand one hundred fifteen positions were filled by he designers, and 16.5 percent by she designers. 81.7 percent of the two hundred twenty-four positions were filled by he designers, and 18.3 percent by she designers in the C-1 category. In the C-2 category, 82.6 percent of the three hundred eighty positions were filled by he designers, and 17.4 percent by she designers. In the D category, 73.4 percent of the one thousand five hundred fifty-two positions were filled by he designers, 26.5 percent by she designers, and 0.1 percent by they designers.

Who Designs in LORT Theatres by Pronoun: Categories (continued)

In sound design, 96.8 percent of the sixty-three positions were filled by he designers, and 3.2 percent by she designers in the A+ category. In the A category, 93.9 percent of one hundred forty-eight positions were filled by he designers, and 6.1 percent by she designers. 95.6 percent of the one hundred eighty positions were filled by he designers, and 4.4 percent by she designers in the B+ category. In the B category, 88.2 percent of the one thousand one hundred five positions were filled by he designers, and 11.8 percent by she designers. 88.0 percent of the two hundred sixteen positions were filled by he designers, and 12.0 percent by she designers in the C-1 category. In the C-2 category, 89.4 percent of the three hundred seventy-one positions were filled by he designers, and 10.6 percent by she designers. In the D category, 85.0 percent of the one thousand five hundred nine positions were filled by he designers, 14.7 percent by she designers, and 0.3 percent by they designers.

In projection/video design, 100.0 percent of the eleven positions were filled by he designers in the A+ category. In the A category, 72.2 percent of twenty-seven positions were filled by he designers, and 27.8 percent by she designers. 89.3 percent of the twenty-eight positions were filled by he designers, and 10.7 percent by she designers in the B+ category. In the B category, 84.5 percent of the two hundred thirty-five positions were filled by he designers, and 15.5 percent by she designers. 62.2 percent of the thirty-seven positions were filled by he designers, and 37.8 percent by she designers in the C-1 category. In the C-2 category, 84.0 percent of the seventy-two positions were filled by he designers, 14.6 percent by she designers, and 1.4 percent by they designers. In the D category, 85.9 percent of two hundred seventy positions were filled by he designers, and 14.1 percent by she designers.

In all design, 77.0 percent of the two hundred sixty-three positions were filled by he designers, and 23.0 percent by she designers in the A+ category. In the A category, 76.7 percent of the six hundred twenty-five positions were filled by he designers, and 23.3 percent by she designers. 75.2 percent of seven hundred sixty positions were filled by he designers, and 24.8 percent by she designers in the B+ category. In the B category, 73.0 percent of the four thousand six hundred seventy-seven positions were filled by he designers, 27.0 percent by she designers, and less than 0.1 percent by they designers. 67.6 percent of the nine hundred twenty-four positions were filled by he designers, 32.1 percent by she designers, and 0.2 percent by she/they designers in the C-1 category. In the C-2 category, 71.2 percent of the one thousand five hundred seventy-two positions were filled by he designers, 28.7 percent by she designers, and 0.1 percent by they designers. In the D category, 63.7 percent of the six thousand four hundred ninety positions were filled by he designers, 36.2 percent by she designers, 0.1 percent by they designers, and 0.1 percent by she/they designers.